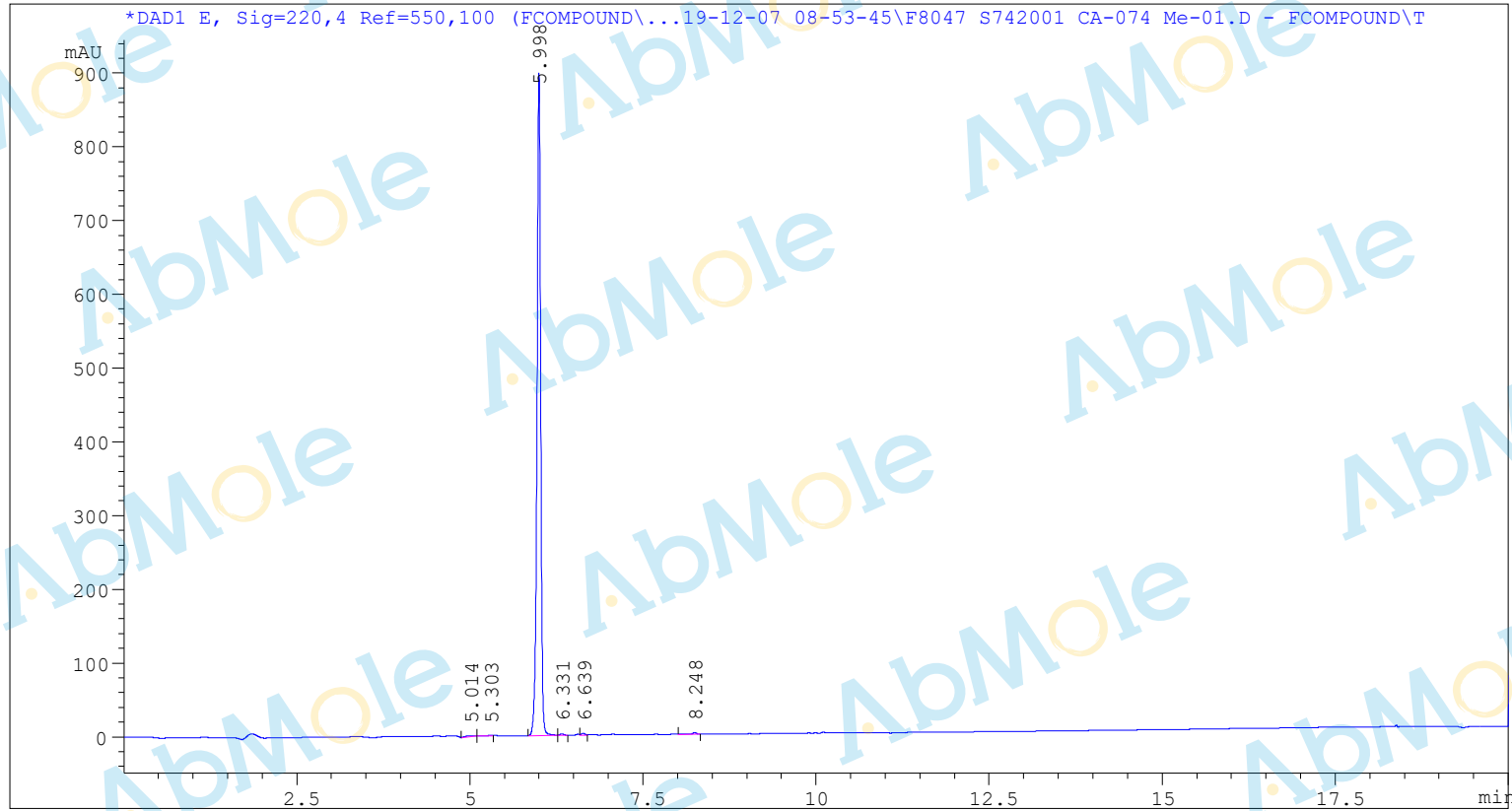


Sample Name: CA-074 Me-01

```

=====
Acq. Operator   : SYSTEM                               Seq. Line :    3
Acq. Instrument : 12601c                               Location  : Vial 21
Injection Date  : 12/7/2019 9:40:31 AM                Inj       :    1
                                                    Inj Volume: 2.000 µl
Different Inj Volume from Sample Entry! Actual Inj Volume : 0.300 µl
Method          : C:\CHEM32\1\DATA\FCOMPOUND\TEST 2019-12-07 08-53-45\TEST12.M (Sequence
                Method)
Last changed    : 12/7/2019 8:53:56 AM by SYSTEM
Additional Info  : Peak(s) manually integrated
=====

```



```

=====
                          Area Percent Report
=====

```

```

Sorted By      :      Signal
Multiplier     :      1.0000
Dilution      :      1.0000
Use Multiplier & Dilution Factor with ISTDs

```

```

Signal 1: DAD1 E, Sig=220,4 Ref=550,100
Signal has been modified after loading from rawdata file!

```

Peak #	RetTime [min]	Type	Width [min]	Area [mAU*s]	Height [mAU]	Area %
1	5.014	BB	0.1189	11.08123	1.19828	0.3293
2	5.303	BV	0.0695	5.28899	1.06414	0.1572
3	5.998	BV	0.0561	3321.61401	898.16351	98.7158
4	6.331	VB	0.0528	7.22462	2.06391	0.2147
5	6.639	VV	0.0537	9.56117	2.70939	0.2842
6	8.248	VB	0.0720	10.05655	1.95422	0.2989

Totals : 3364.82657 907.15347

=====  
\*\*\* End of Report \*\*\*